

Sellers Senior Center

JANUARY/FEBRUARY 2026

2800 SILVERSIDE ROAD WILMINGTON, DE 19810
(302) 762-2050 FAX: (302) 762-2051

facebook 

SELLERSSENIORCENTER@VERIZON.NET

WEBSITE: WWW.SELLERSSENIORCENTER.ORG

LIKE US ON Facebook: SELLERS SENIOR CENTER

Staff:

Executive Director -
Jennifer Brooks

Administrative Asst-
Brianna Snover

City Fare Site Manager -
Jeannie Whye

Board of Directors:

President -
Matt Mayer

Vice President -
Kathy Scott

JJ Beans

Alice Collins

Linda Deeney

Terri Doodly

Keisha Jacobs-Jackson

Debbie Kling

Linda Murphy

Kay Rzucidlo

Kristen Stetler-Donovan

Kim Williams

Honorary Member

John Weaver

Atlantic City Tropicana Presents

“Famous Duets” Tribute Show Cost: \$83



April 20, 2026



Cost includes Motorcoach Transportation,
\$20 in Bonus Slot Dollars, Drivers Tip and
Admission to the 3PM Show

A celebration of some of the most iconic
Music Collaborations in history. Spanning 50
years of Duets from Artists like Dolly Parton &
Kenny Rogers, Johnny and June Cash,
Sonny & Cher, Marvin Gaye & Tammi Terrell,
Simon & Garfunkel, and many more!

Center Closings



Please listen to WDEL (1150 AM or www.wdel.com)
for announcements regarding center cancellations or
closures due to inclement weather. Listen for **Sellers
Senior Center** to be announced, as this will provide
the most accurate information. An email will also be
sent in the event of a closure.

Please Note:

**First day of trip
sign ups will be
Monday, 1/5
Beginning at
9:30am.**

Hours of Operation:

Monday & Tuesday

8:30—3:30pm

Wed., Thurs., Friday

8:30—2:30pm

Instructors:

Fitness -

Eric Wolf

Creative Cards -

Ellen Paoletti

Cardio Drumming-

Mary Ellen Luise

Painting -

Colleen Hover

At the time of publication of our bi-monthly newsletter, the Information is as complete and accurate as possible. All items are subject to change.

Services Available

Library: Books can be borrowed during center hours. Returned books should be placed in the basket. Our dedicated “librarians” will keep our library in order.. **Not accepting books 2015 or older.**



Stamps: Postage stamps are available for purchase in the office.



DE Durable Power of Attorney: Financial

Guide to Services for Older Delawareans: A publication for Older Delawareans and Persons with Disabilities.

Handicapped Parking: Placard application

Paratransit: Tickets are available in the main office for \$10 per strip. ID required. Applications also available

School Tax Credit: Senior deduction in taxes. (form)

Senior Roll Call: This daily telephone service provides added comfort and security that you may need to maintain your independence. To enroll call 302-395-8159.



Membership Information

Welcome New Members: Gene Bradley, Janet Kulp, Maureen Bonnes, Nancy Sostaregz, Nelson Merideth

Thinking of You: Joe VanSuch, Eileen Denis, Karen Outten, Dorothy Medeiros, Cindy Grant, Eleanor Rozmarynoski, Gil Wilbur, Pat Comegys, Len Bordzol, Millie Burke, Fran McCormick, James Parks

In Memory of: Connie Vattalana, Coraline Henry, Michael Kulp

Nutrition Program

City Fare offers a hot meal or bagged supper to those 60 years of age and older.



A donation for the meal is based on income.

Suggested cost: Hot meals and Bag Suppers are now \$4.00 each

Persons under 60 years of age are required by government regulations to pay \$8.00.

Note: Please make reservations by noon the day before. Cancellations must also be made by noon the previous day.

Health and Fitness



'Feel Better' Fitness Class "If you don't MOVE it - you will LOSE it."

Classes consist of: 10-15 min. walking paced warm-up, 30 min. work-out while sitting, 10 min. standing work-out, and 5 min. relaxation cool down. These exercises are good for Seniors with Arthritis, Osteoporosis, or Cardiac Rehab. Participants will gain muscular strength, endurance, and flexibility through gentle movements, chair exercises and stretching.

Monday, Wednesday, and Fridays from 9:00-10:00 & 10:15- 11:15am

Cost: \$3 per class Instructor: Eric Wolf

The 10:15 class has reached capacity. We encourage you to attend the 9:00 class if possible.

Wii Bowling



Our first session went well! Our second session to begin Jan. 5.

We are always in need of Subs, if you'd like to sign up to be a sub, please contact the office.

If you wish to bowl another set of snow scores please do so by 1/5.

Our Mission

Sellers Senior Center is dedicated to enhancing the quality of life for senior citizens in our area by providing quality human services, social contacts, recreation, nutrition and advocacy. Membership is welcome to anyone 50 years of age or older regardless of religion, gender, race, or color.

Ongoing Activities



Bingo: Fridays, 12:30—2:00pm. Bring your nickels and enjoy refreshments with friends. Donations are always appreciated. Callers: Alex Sokolski & Suzanne Scolis

Bridge: Duplicate Bridge (requires a partner)—Tuesdays, 9:00am - 12:00pm.

Bridge: Duplicate Bridge (requires a partner) - \$3 every Thursday, 9:00am-12:00pm. For more information, contact the office.

Bunco Every Monday from 10:00am - 12:00 noon. Cost: \$2.00 (cash prizes)

Canasta: Thursdays 12:30-2:30pm, Fridays 10:00am-12:00 noon. Beginners welcome.

Cardio Drumming Tuesdays 1:00-2:00 \$3 per Class

Creative Cards: Learn to make creative cards you can send to your family and friends. Events are geared towards fun, fellowship and learning. Second & fourth Thursdays of each month at 11:00am. Sign up 2 weeks in advance. For more info and to sign up contact: stampwithellen@aol.com

Pinochle: Mondays and Tuesdays, 12:30 –3:30. **New Pinochle players needed!**



Painting Class: A fun painting class with acrylic paint on canvas. 2nd & 4th Wednesday of each month at 1:00pm. \$6 includes instruction, canvas & paints.

Wii Bowling Interested in joining a team, please contact the office. Substitute bowlers needed as well!



Tai Chi Chih Presentation



Join accredited instructor **Christine Sapp** for a **Tai Chi Chih (TCC)** presentation on ***Thursday, January 15 at 10:00 AM.***

Tai Chi Chih is a moving mindfulness practice, often called *moving meditation* or *joy through movement*. Developed in 1974 by Justin Stone, TCC uses 19 gentle movements and one pose to help activate and balance Chi—the vital energy within all living things. Regular practice may promote relaxation, stress reduction, inner peace, mental clarity, and creativity. TCC is not exercise or religion, but a gentle spiritual practice Christine is excited to share with others.

If we receive a good response, classes will begin and be held on Thursdays at 10:00 AM. Please let the office know if you'd like to attend the presentation.

Chronic Disease Presentation



Thursday, January 22

11:00am

Join Megan City Fare's Dietitian in this nutrition discussion about diabetes. Learn what it is, how it effects the body, how to prevent it, and how to control symptoms all through nutrition!

Sign up in the office if you'd like to attend!

Give Back Fundraiser— La Pizzeria Metro

Join us on *Tuesday January 20th*, for a give back fundraiser. This offer is good for dine in and take out during the hours of 4:00-9:00pm. 10% of each order will generously be donated to Sellers. Please mention Sellers Senior Center fundraiser to your server or when you place your take out order.



Thank you for your support!

La Pizzeria Metro—3101 Miller Rd. Wilmington, DE 19802

“Guess the Kisses” Jar



Stop in the office and try your luck guessing how many kisses are in the jar! Closest guess wins the jar of kisses to take home!

Stop in Valentine's week to submit your guess

Inspire by Touch Massages

“Inspire by Touch”

Khalil Abdul-Majid will be here at Sellers **January 13, 27 & February 10, 24**

Cost: 10 Minutes- \$5.00

15 Minutes - \$10.00

30 Minutes - \$25.00



Scheduling appointments with **payment** are made in the office.

Please be advised that if you do not show for your appointment, we will not grant a refund. If you should need to cancel please give 24 hours notice if possible.

Wear comfortable clothes. Schedule in the main office.

Valentine Craft

Join Linda Murphy to make a *Heart Wreath!*



Wednesday January 28th 1:00pm

Cost: \$10.00

Just in time for Valentine's Day!

Sign up in the office if interested!

Give Back Fundraiser - Café Riviera



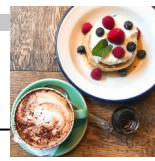
Join us on **Thursday, February 12th** for a give back fundraiser. This offer is good all day for dine in or take out. 10% of each sale will generously be donated to Sellers. Please mention Sellers Senior Center to your server or when you place your take out order. Curb side pickup is available & easy, go around the old Sears and the door is the 5th door down. Call when you arrive and your order will be brought out.



Thank you for supporting a local business & SSC!

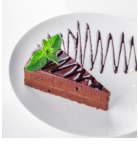
Café Riviera-Concord Mall 302-478-8288

The Legend Restaurant & Bakery



Tuesday, February 3 at 9:00am

Trans Cost: \$4.00



Join your friends out for breakfast & Coffee!
Stop by the bakery and pick up a treat to enjoy later!

Sign up in the office beginning January 5.

“SOUP”er Bowl Soup Sale



Purchase soup to take home!

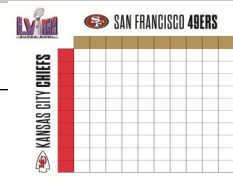
Thursday Feb, 5th

Quart sizes available!

Prices will depend on types of soup being sold!

**If you have a specialty soup and would like to make some,
please let the office know.**

Super Bowl Squares Fundraiser



Each square is \$3

Choose a square(s) and write your name in the square

Winner is determined by last digit of final score

If all boxes are filled, you could win \$150

Purchase squares in the main office from
Monday, January 26, - Friday, February 6.

AARP Defensive Driving



Refresher course (4 hr) will be held on, Thursday, February 26, from 9am-1pm

\$20 for AARP Members, \$25 for Non Members. Cash or check accepted.

Checks can be made payable to AARP.

Please see Sellers office to sign up!



Trip Guidelines

Everyone attending Sellers trips must be able to care for their own personal needs and make independent decisions for themselves.

Also, consider the amount of walking that is involved with our bus trips. If assistance is required by the participant he or she must provide their own caregiver and pay for same.

- ♦ Payments for all trips must be made at time of sign-up.
- ♦ Times listed for trips reflect departure/arrival times to and from the center.
- ♦ The bus will start loading passengers 15 minutes prior to departure.
- ♦ Departure time will be as scheduled with or without all passengers.
- ♦ Prepaid tickets for events are not refundable unless a replacement is found.
- ♦ Please remember to park furthest from the center when going on trips.

Medication Cost Review



Do you have questions about the cost of your medications?
Would you like to see if you can save money on your medications?

Debbie Kling, is a retired social worker having worked for
Christiana Care for over 30 years.

Debbie is also a Sellers Board Member.

Bring in your medication list and see if there are more
affordable options.

You will need to bring your current medication list, print out from
your pharmacy of your medication costs and your
insurance card.

When: Tuesday 1/13 & 2/10

If interested please sign up for a time slot in the main office!

Email and Internet Scams Presentation



January 26 at 1:00pm

Join Ron Pierce for a presentation on *Email and Internet Scams*. He will also leave you with some ways to protect information on line in order to prevent fraud and identity theft.

Sign up in the office if interested!

Wilmington Drama League



Wilmington Drama League Presents

Thursday, January 22 at 8pm

I Love You, You're Perfect, Now Change, the second longest running off Broadway musical, is a hilarious musical comedy that uses four actors to play over 40 roles in a collection of scenes and songs scaling the dizzying spectrum of male/female relationships.

Wednesday, February 4 at 8pm

The Ruby Stanley One-Act Festival, *The Ruby Stanley One-Act Festival* is named for a late longtime Wilmington Drama League volunteer, board member and costume mistress. The production, which frequently features original works by local playwrights, culminates with a two-day festival in which audience members vote for their favorite play. The winner then represents the Wilmington Drama League at the state, and often regional, level.

No tickets required for preview night!

Donations and Bequests

Donations and bequests to Sellers Senior Center are deductible for the purpose of computing income and inheritance taxes under the law for donations and bequests for charitable corporations.

Memorial Fund: Contributions to this living memorial is a very thoughtful way of perpetuating the memory of our friends and loved ones. Their families will be notified of your remembrance.

United Way Donations: When making donations to United Way, remember to write in Sellers Senior Center's code **#9063** on the back of the card. We are also a member of the United Way of Southern Pennsylvania. For Pennsylvania donations please use **#48809**.

Valentine Bingo



Thursday, February 12

Come join us for a Valentine Lunch Bingo

Cost: \$8.00

Sign up in the office beginning 1/5.

Lunch served at 12:00pm Bingo to begin at 12:45pm

Cash Prizes, Door Prizes & 50/50.



Mystery Lunch



Tuesday, January 13 & Thursday, February 19

Time: 11:30am-2:30pm

Transportation Cost: \$4.00

Sign up in the office beginning January 5.



Stay Tuned


Be on the lookout for multi day trip
information coming soon!



Center Closings

Jan. 1 in observance of New Years, Jan. 19 in observance of Martin Luther King Jr. Day, Feb. 16, in observance of Presidents' Day.

Puzzle Nook

Visit our library to see our great selection of jigsaw puzzles. There is always a puzzle in the process. Put in a few pieces or stay for the afternoon! 

Thank you all for your generous donations toward our Thanksgiving baskets. With your support, we were able to put together 18 baskets.

We are also very grateful to all of our volunteers who help throughout the year.



Mimi's Tea Cottage

Enjoy an assortment of tea, scones, sandwiches, and dessert



Thursday, February 5

Cost: \$31.00

Trans Cost: \$4.00

Depart center at 10:45am 11:30am Reservation

4 Tea Sandwiches, Scone, 4 Dainty Desserts & Unlimited Tea

Sign up in the office beginning January 5.

Herr's Snack Factory



Tuesday, February 24th at 9:00am

Walking tour scheduled for 10:00am - takes about 1 hour.

Cost: \$8

Trans Cost: \$5

Experience the Herr's Snack Factory Tour to see exactly how Herr's makes your favorite foods. Everyone will enjoy a fresh sample of chips, served warm from the production line, while learning interesting facts, like how a pretzel is baked, or what makes a great chipping potato, and how tortilla chips get their seasoning. Also enjoy a snack to take home.

Sign up in the office beginning January 5.

Chadds Ford Tavern

Tuesday, January 27

11:15am-2:30pm



Transportation Cost: \$4.00

Enjoy this cozy eatery featuring casual fare such as burgers, steaks, salads, sandwiches and seafood.

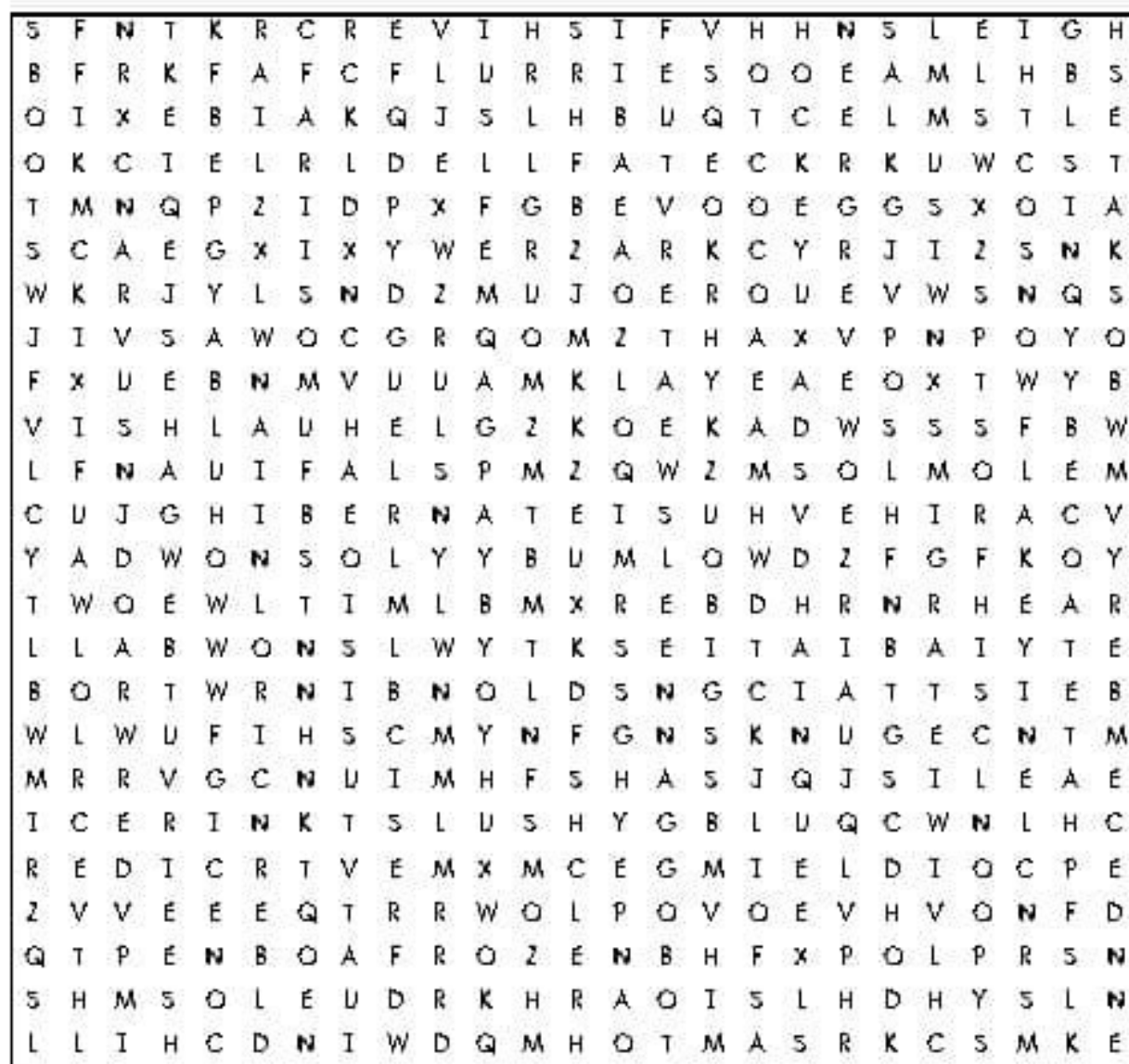
Sign up in the office beginning January 5.



Winter



Find all 50 HIDDEN WORDS in the word search puzzle below. Good luck!



ALPINE
BLIZZARD
BOOTS
CABIN
CHILLY
CIDER
COAT
COLD
DECEMBER
DRIFT

EARMUFFS
EVERGREEN
FIREPLACE
FLURRIES
FREEZING
FROST
FROZEN
GLOVES
HAT
HIBERNATE

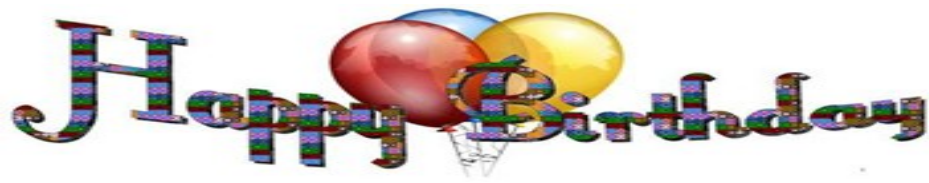
HOCKEY
HOT COCOA
ICE RINK
ICICLE
JANUARY
MIGRATE
MITTENS
PLOW
SCARF
SCULPTURE

SHIVER
SHOVEL
SKATES
SKIING
SLEDDING
SLEIGH
SLUSH
SNOW
SNOWBALL
SNOW DAY

SNOWFLAKE
SNOWMAN
SNOWMOBILE
SNOWSHOES
SNOWSUIT
SWEATER
TOBOGGAN
WHITE
WIND CHILL
WINTER

January Babies

1.1 Loretta Schneider
1.2 Anthony Damato
1.5 Audrey Jordan
1.6 Elissa Brooks
Ginny Feeley
Carol Middleton
1.7 Rita Vasta
1.8 Janet Geib
1.9 Sharon Gaudino
Mary Lang
1.10 Maureen Bonnes
Cornelia Handago
Pat Wysocki
1.11 Sandy Scheibe
Helen Yates
1.12 Mary Krawczuk
Lizanne Norton
Arlene Trapuzzano
1.16 Anne Dunworth
1.18 Barbara Coulbourn
Irma Giglia
1.19 Louise Armstrong
1.20 Diane Brake
Judy Carinci
Pat Scarborough
1.22 Joe Gegan

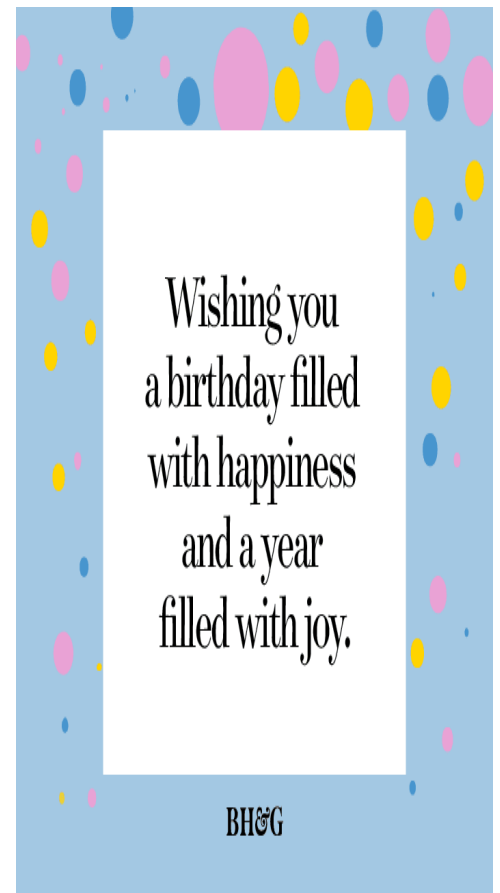


1.24 Anna Beane
Bill Rodriguez
Pat Sherk
Pat Waldorf
1.25 Jean Rodriguez
1.28 Debbie Wat
1.29 Tim Spence
1.31 Manuel Velez

February Babies

2.4 Hilda Burton
2.6 Fran Adams
Dottie Cullen
Joyce Montana
2.9 Susan Kleinhomer
2.10 Annaliese Strube
2.11 Frank Wysocki
2.13 Lou Masci
2.14 Olivia Noronha
Donna Wilson
2.15 Nancy Maradie
2.16 Dorothy Cutting
2.17 Cheryl Mentuda
2.19 Nancy Furman-Hargis
2.20 Denny Barrowclough
2.21 Susan Cedrone
George Grandel

2.22 Elizabeth Varley
2.25 Irene Bradley-Sacher
2.26 Pat Kehner
2.28 Loretta Brady



Sellers 2800 Silverside Rd.

Senior Wilmington, DE 19810

(302) 762-2050

Center

Sellers Trip Sign-up Form

Non-members must wait a week after sign ups start to sign up (if we have openings)

Qty	Trip/Activity	Price	Paid
	Inspired by Touch Massage Tues, 1/13, 1/27, 2/10, 2/24	See Newsletter	
	Mystery Lunch 1/13	Trans Cost \$4	
	Tai Chi Chih Presentation 1/15	Free	
	Chronic Disease Presentation 1/22	Free	
	Email & Internet Scams Presentation 1/26	Free	
	Chadds Ford Tavern 1/27	Trans Cost \$4	
	Valentine Craft 1/28	Cost \$10	
	The Legend Restaurant 2/3	Trans Cost \$4	
	Mimi's Tea Cottage 2/5	Cost: \$31 Trans Cost \$4	
	Valentine Bingo 2/12	Cost \$8	
	Mystery Lunch 2/19	Trans Cost \$4	
	Herr's Snack Factory 2/24	Cost: \$8 Trans Cost \$5	
	Medication Cost Review 1/13 & 2/10	Free	
	Charter Trips ~		
	Atlantic City—Tropicana 4/20	\$83 Deposit \$25	

Total_____

Name: _____ Date _____ Cash / Check # _____

Sellers Senior Center is dedicated to enhancing the quality of life for senior citizens in our area by providing quality human services, social contacts, recreation, nutrition, and advocacy.

The programs and services of Sellers Senior Center, Inc. are in part sponsored by the State of Delaware Division of Aging, The Nutrition Program for New Castle County's Senior Generation (City Fare) and the